

Light efficiency:

100 Lumen/Watt

Color temperature:

4111 K

Light quality:

CRI:94.1, R_g:96.5, R_r:89.5

P: 2 / V: - / F: 3

Output: 2062 lm

Peak: 4519 cd

Power: 20.5 W

Voltage: 119 V

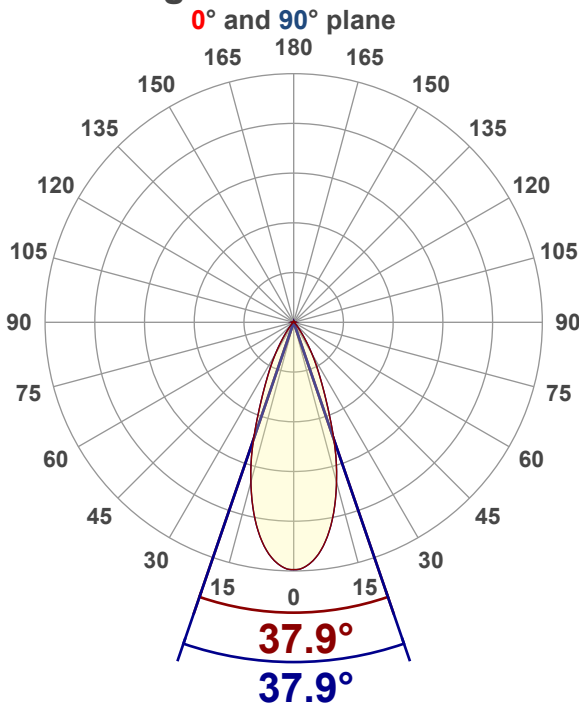
Current: 0.176 A

PF: 0.98

THD: 8.45 %



Angular Distribution



Product name:

RA35P-12CTR-M2P2SXXX

Test Date:

9/29/2025

Beam Angle (50% of the brightness of the centre):
37.9°

Field Angle (10% of the brightness of the centre):
65.4°

Cut Off Angle (2.5% of the brightness of the centre):
81.9°

Beam Details

*measured at centre of beam

Mounting Height (feet)/(meter)	Lux*	Footcandles*	Beam width (feet) / (meter)
4 ft / 1.2 m	3040 lx	282 fc	2.7 ft / 0.8 m
8 ft / 2.4 m	760 lx	71 fc	5.5 ft / 1.7 m
12 ft / 3.7 m	338 lx	31 fc	8.2 ft / 2.5 m
16 ft / 4.9m	190 lx	18 fc	11 ft / 3.3 m
20 ft / 6.1m	122 lx	11 fc	13.7 ft / 4.2 m

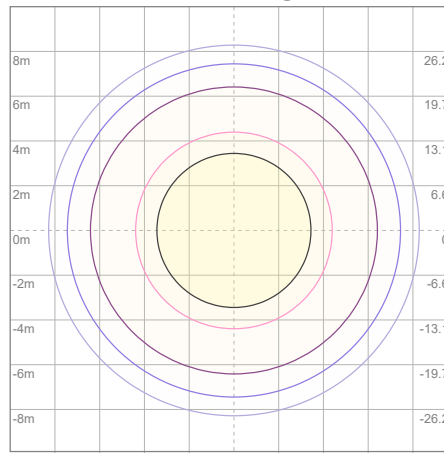
Beam center

Photometric Testing Report

Zonal Lumen Summary

Zone	Lumen	%Luminaire
0-30	1777	86.18%
0-40	1983	96.17%
0-60	2053	99.56%
60-90	6.50	0.32%
70-100	1.38	0.07%
90-120	0.219	0.01%
0-90	2060	99.90%
90-180	2.47	0.12%
0-180	2062	100.00%

ISO Lux Diagram



Lux at center:		486 lx
—	3%	14.58 lx
—	5%	24.30 lx
—	10%	48.60 lx
—	30%	145.80 lx
—	50%	243.00 lx

Conditions:
 Number of planes: 4
 Lux distribution on a surface when lamp is mounted at 3.05 meters from the surface.

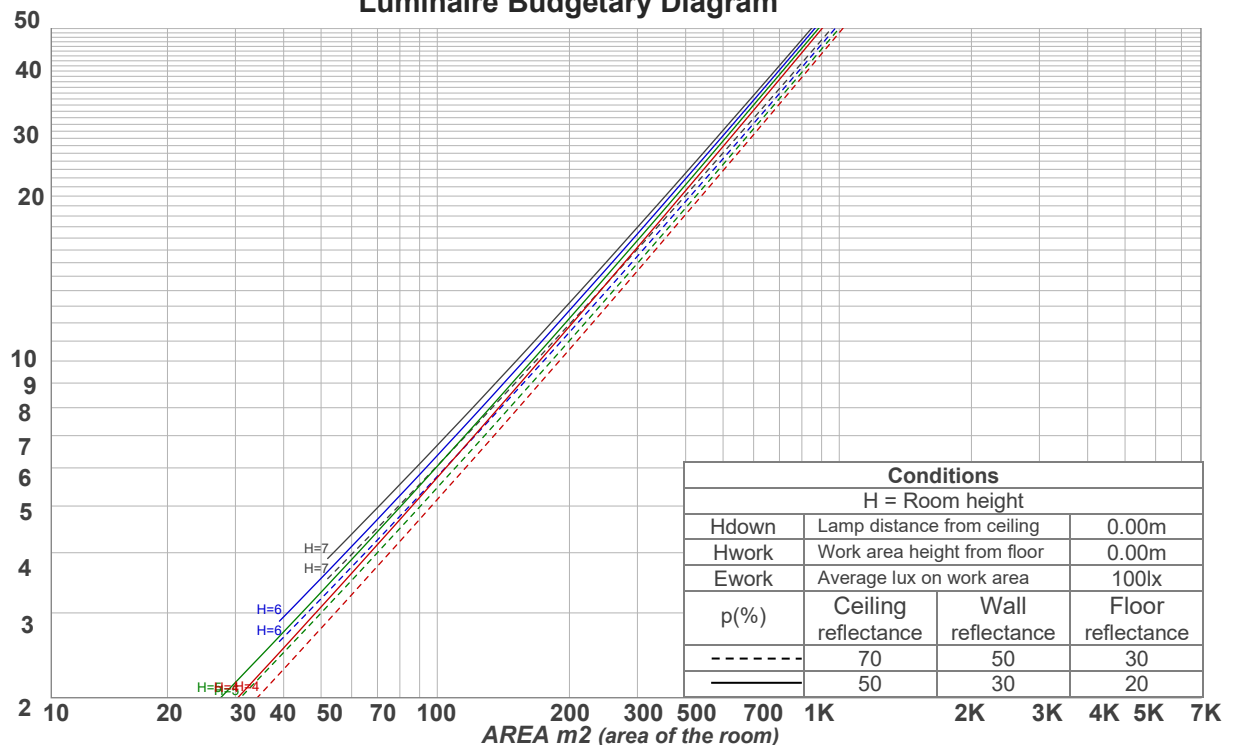
Mounting height: 3.05 meters (10 feet)

Coefficients of Utilization

Ceiling reflectance	80				70				50			30			10			0
	70	50	30	10	70	50	30	10	50	30	10	50	30	10	50	30	10	0
Wall reflectance	70	50	30	10	70	50	30	10	50	30	10	50	30	10	50	30	10	0
Floor reflectance	20	20	20	20	20	20	20	20	20	20	20	20	20	20	20	20	20	0
RCR	(RCR: Room Cavity Ratio)																	
	Room Values are expressed as percentage of Lumens delivered to the task surface																	
0	119	119	119	119	116	116	116	116	111	111	111	106	106	106	102	102	102	100
1	114	112	110	108	112	110	108	106	106	104	103	102	101	100	98	98	97	95
2	110	105	102	99	107	104	100	98	100	98	96	97	95	94	95	93	92	90
3	105	99	95	92	103	98	94	91	96	92	90	93	90	88	91	89	87	85
4	101	94	90	86	99	93	89	85	91	87	84	89	86	83	87	85	83	81
5	97	90	85	81	95	89	84	81	87	83	80	85	82	79	84	81	79	77
6	93	85	80	77	92	85	80	76	83	79	76	82	78	75	81	77	75	74
7	89	81	76	73	88	81	76	73	80	75	72	78	75	72	77	74	71	70
8	86	78	73	69	85	77	72	69	76	72	69	75	71	69	74	71	68	67
9	83	75	70	66	82	74	69	66	73	69	66	72	68	66	72	68	65	64
10	80	72	67	63	79	71	66	63	70	66	63	70	66	63	69	65	63	62

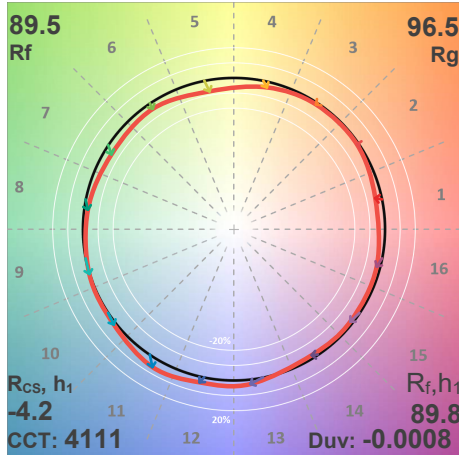
LAMPS (number of lamps)

Luminaire Budgetary Diagram

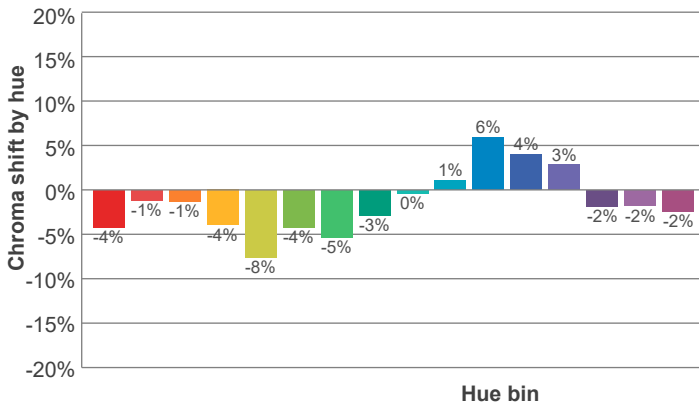
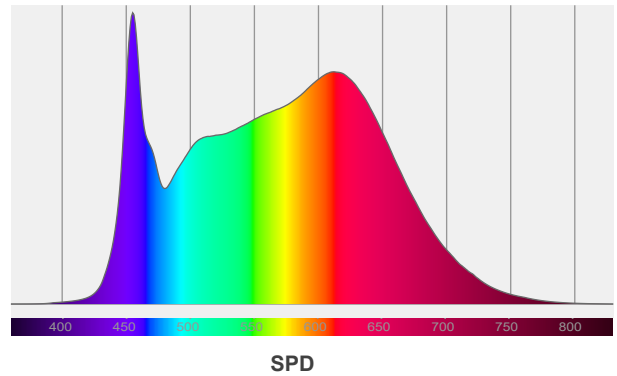
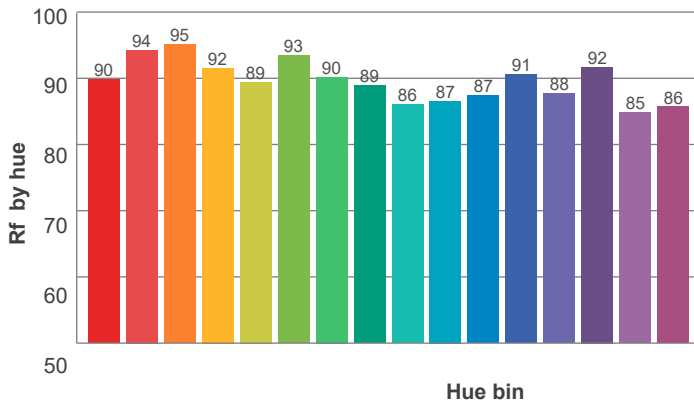
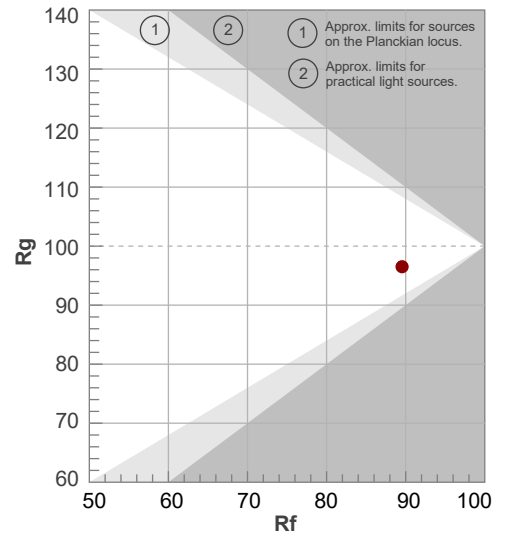


Conditions			
H = Room height			
Hdown	Lamp distance from ceiling	0.00m	
Hwork	Work area height from floor	0.00m	
Ework	Average lux on work area	100lx	
p(%)	Ceiling reflectance	Wall reflectance	Floor reflectance
-----	70	50	30
—————	50	30	20

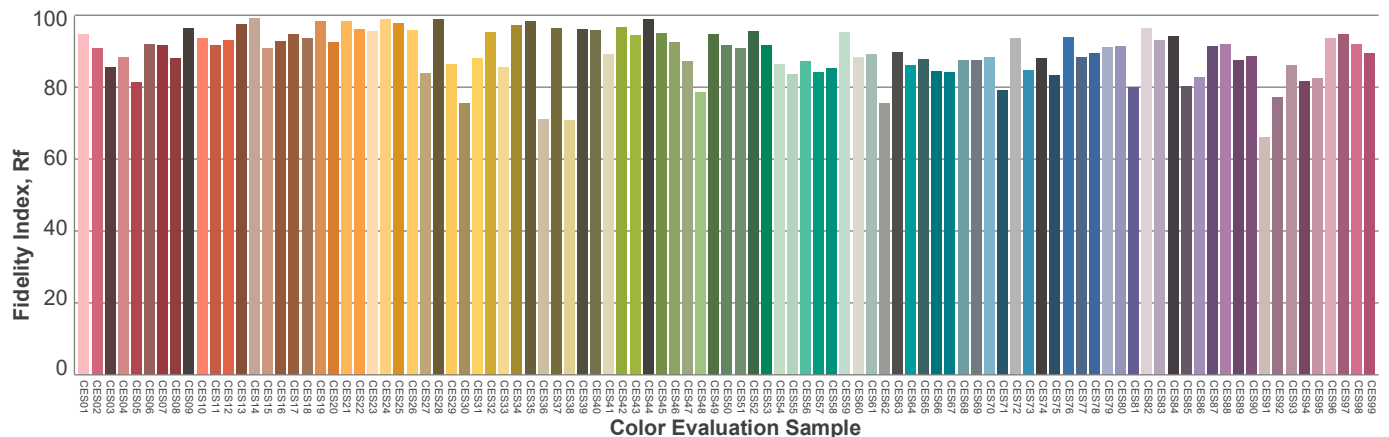
ANSI/IES TM-30-18 P: 2 / V: - / F: 3



Hue Bin	R _f	Shifts (%)	
		Chroma	Hue
1	90	-4%	2%
2	94	-1%	1%
3	95	-1%	1%
4	92	-4%	-3%
5	89	-8%	-2%
6	93	-4%	0%
7	90	-5%	4%
8	89	-3%	6%
9	86	0%	11%
10	87	1%	9%
11	87	6%	6%
12	91	4%	-2%
13	88	3%	-9%
14	92	-2%	-4%
15	85	-2%	-8%
16	86	-2%	-6%



Red: 27.9%, Power=13.7mW
 Blue: 16.9%, Power=23.0mW
 Green: 28.4%, Power=26.5mW
 UVA: 0%, Power=0.0mW
 Dominant Wavelength: 582nm
 1st Peak Wavelength: 455nm
 2nd Peak Wavelength: 611nm



Glare Evaluation According to UGR

Corrected, comprehensive UGR table according to 117-1995, S/H ratio=0.25

p Ceiling	70	70	50	50	30	70	70	50	50	30	
p Walls	50	30	50	30	30	50	30	50	30	30	
p Floor	20	20	20	20	20	20	20	20	20	20	
Room size H = mounting height above eye level X Y	Viewing direction at right angles to lamp axis					Viewing direction parallel to lamp axis					
2H	2H	12.2	12.7	12.3	12.9	13.1	12.2	12.7	12.3	12.9	13.1
	3H	11.9	12.6	12.3	12.7	12.9	11.9	12.6	12.3	12.7	12.9
	4H	11.8	12.5	12.2	12.7	12.9	11.8	12.5	12.2	12.7	12.9
	6H	11.8	12.3	12.1	12.6	13.0	11.8	12.3	12.1	12.6	13.0
	8H	11.8	12.3	12.1	12.6	13.0	11.8	12.3	12.1	12.6	13.0
12H	11.7	12.2	12.1	12.6	13.0	11.7	12.2	12.1	12.6	13.0	
4H	2H	11.8	12.5	12.2	12.7	12.9	11.8	12.5	12.2	12.7	12.9
	3H	11.8	12.2	12.1	12.6	13.0	11.8	12.2	12.1	12.6	13.0
	4H	11.6	12.1	12.0	12.5	13.0	11.6	12.1	12.0	12.5	13.0
	6H	11.5	12.0	12.0	12.4	12.7	11.5	12.0	12.0	12.4	12.7
	8H	11.5	11.9	12.0	12.3	12.6	11.5	11.9	12.0	12.3	12.6
12H	11.4	11.8	11.9	12.2	12.6	11.4	11.8	11.9	12.2	12.6	
8H	4H	11.5	11.9	12.0	12.3	12.6	11.5	11.9	12.0	12.3	12.6
	6H	11.4	11.7	11.9	12.2	12.7	11.4	11.7	11.9	12.2	12.7
	8H	11.4	11.6	11.9	12.2	12.8	11.4	11.6	11.9	12.2	12.8
	12H	11.3	11.5	11.9	12.0	12.6	11.3	11.5	11.9	12.0	12.6
12H	4H	11.4	11.8	11.9	12.2	12.6	11.4	11.8	11.9	12.2	12.6
	6H	11.4	11.6	11.9	12.2	12.8	11.4	11.6	11.9	12.2	12.8
	8H	11.3	11.5	11.9	12.0	12.6	11.3	11.5	11.9	12.0	12.6
Variation of the observer position for the luminaire distance S											
S = 1.0H	5.4 / -7.8					5.4 / -7.8					
S = 1.5H	8.0 / -11.5					8.0 / -11.5					
S = 2.0H	10.0 / -13.5					10.0 / -13.5					
Corrected glare indices referring to 2062 lm total luminous flux											

Due to our continued efforts to improve our products, product specifications are subject to change without notice. Please refer to our website for the latest test results.